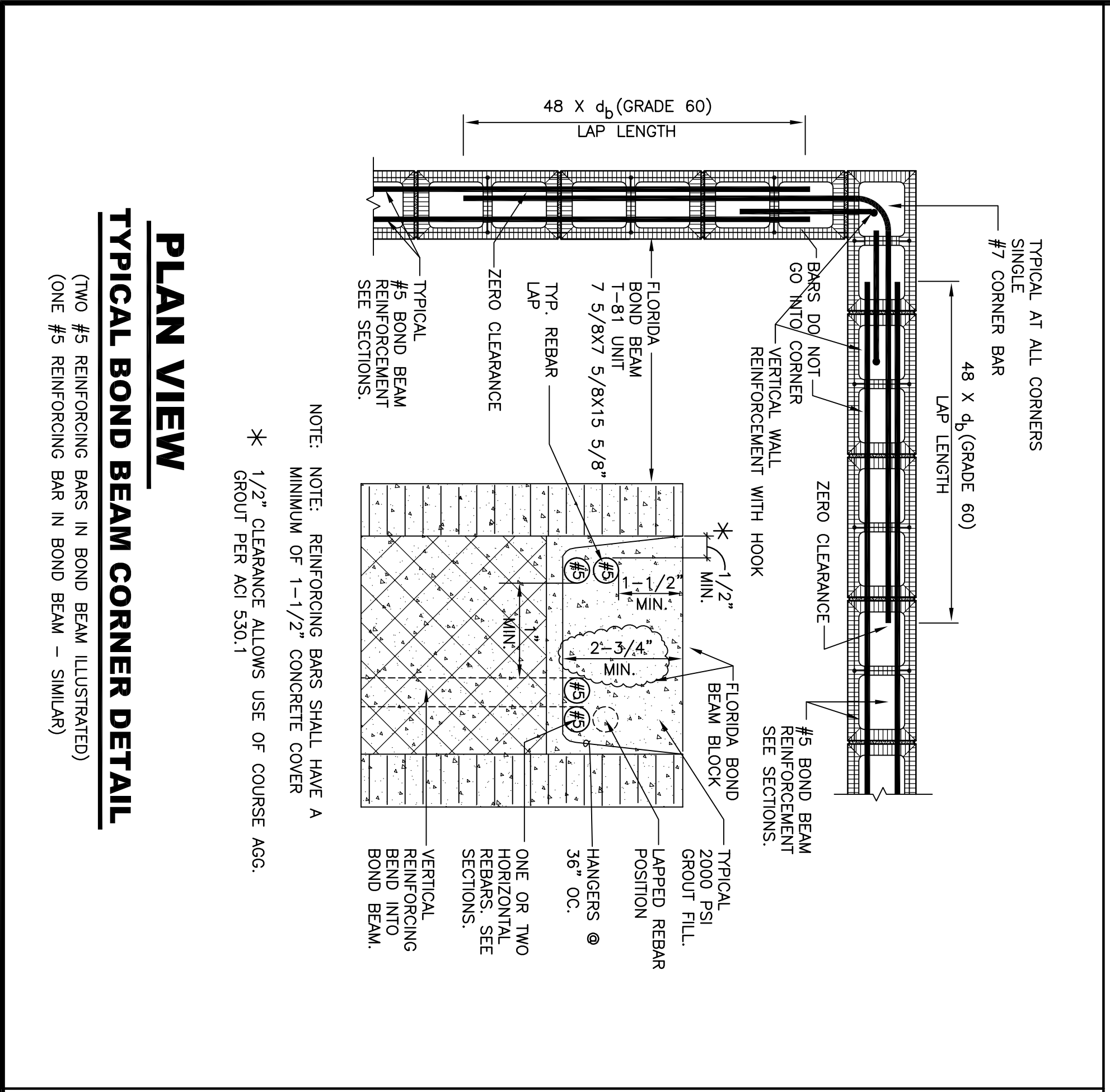
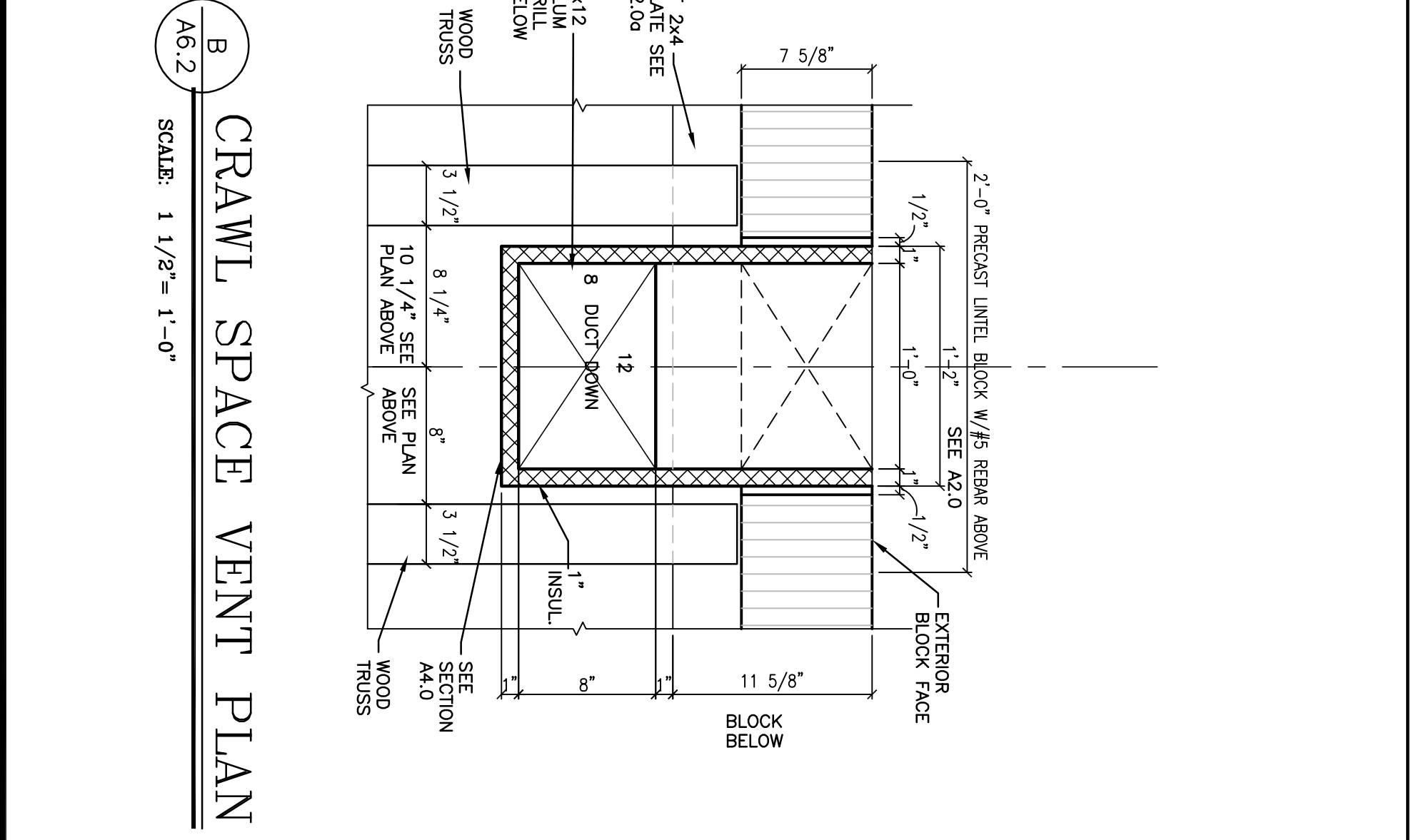
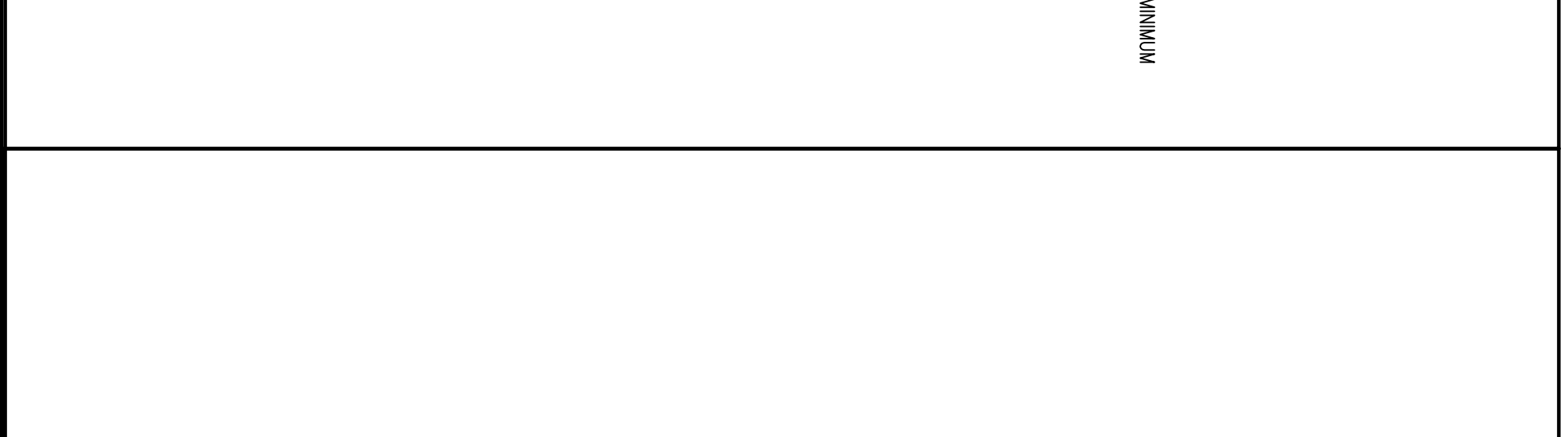


A6.2
A FLOOR TRUSS LAYOUT
 SCALE: 3/4" = 1'-0"



- 11.5 DESIGN COVER REQUIREMENTS:
 11.5.1 CLP CONCRETE FORMED AGAINST EARTH: 3"
 11.5.2 CLP CONCRETE EXPOSED TO EXTERIOR: 2"
 11.5.3 PRE-CAST GROUT FILLED UNITS: 1-1/2"
 11.5.4 CLP CONCRETE NOT EXPOSED: 1-1/2"
 11.5.5 GROUT FILLED MASONRY: 1-1/2"
 11.5.6 PRE-STRESSED CONCRETE UNITS: 1-1/2"
 11.6 WELDED WIRE MESH
 11.6.1 WELDED WIRE MESH SHALL CONFORM TO ASTM A185 (U.O.N.)
 11.6.2 WELDED WIRE MESH SHALL BE SUPPLIED IN SHEETS, AND NOT ROLLS.
 11.7 STEEL REINFORCEMENT IS NOT TO BE WELDED.
 11.8 PRE-STRESSING STRAINS IN PRE-STRESSED CONCRETE MASONRY UNITS SHALL BE 7/32" MINIMUM AND CONFORM TO ASTM A416, GRADE 270, LOW RELAXATION.
 11.9 PLASTIC CHAIRS OR OTHER NON-METALLIC SUPPORT SHALL BE USED TO ELEVATE STEEL REINFORCEMENT ABOVE THE BOTTOM SURFACE OF THE CONCRETE FORM.
 11.10 STEEL REINFORCEMENT LAP AND BEND DIMENSIONS:
 11.11 DESIGN END HOOKS AND REBAR LAP LENGTHS (A6-50) WITH 2007 FLORIDA CODES



A6.2
B CRAWL SPACE VENT PLAN
 SCALE: 1 1/2" = 1'-0"

BAR SIZE	180° HOOK	90° HOOK	HOOK	LAP	EMBLEMENT LENGTH
#3	A	A	R	1 ₂	E
#4	5"	6"	1-1/4"	18"	E
#5	6"	8"	1-1/2"	24"	7"
#6	7"	10"	2"	30"	7"
#7	8"	12"	2-1/4"	36"	8"
#8	10"	14"	2-3/4"	48"	9"
#9	11"	16"	3"	55"	10"
#9	15"	19"	4-3/4"	62"	12"
#10	17"	22"	5-1/2"	69"	14"

SHEET NO. A6.2	HP 08160 12 MAY 2008	REVISIONS	ALTERATIONS & ADDITIONS TO THE RESIDENCE OF PAUL & CAROL COLLINS 54 MOUNTAIN LAKE LAKE WALES, FLORIDA	HAFNER FERLITA ARCHITECTS, INC. Architects and Planners 1408 SWANN AVENUE, TAMPA, FLORIDA 33606 813-253-0421 FAX: 813-253-0480 www.hafnerferlita.com	COPYRIGHT © 2008 HAFNER - FERLITA ARCHITECTS, INC. HAFNER-FERLITA ARCHITECTS, INC. IS AN EQUAL OPPORTUNITY FIRM. ALL ARCHITECTURAL WORK AND DESIGN CREDITED BY HAFNER - FERLITA ARCHITECTS, INC.	THESE PLANS ARE THE PROPERTY OF HAFNER-FERLITA ARCHITECTS, INC. AND SHALL BE RETURNED TO HAFNER-FERLITA ARCHITECTS, INC. UPON COMPLETION OF THE PROJECT. NO REPRODUCTION, COPIES OR ANY CHANGE IN THE ORIGINAL DESIGN OR CONSTRUCTION EXECUTED FROM THESE PLANS WITHOUT THE WRITTEN APPROVAL OF HAFNER-FERLITA ARCHITECTS, INC. OR THE DESIGNER. HAFNER-FERLITA ARCHITECTS, INC. SHALL BE RESPONSIBLE FOR ANY CHANGES TO THESE PLANS BY ANY PERSON OTHER THAN HAFNER-FERLITA ARCHITECTS, INC. THESE PLANS SHALL BE USED IN ACCORDANCE WITH THE PROFESSIONAL SEAL AND LICENSE OF HAFNER-FERLITA ARCHITECTS, INC. IF ANY CHANGES TO THESE PLANS ARE MADE, THEY SHOULD BE READ CAREFULLY FOR ANY ADDITIONAL CONDITIONS.
--------------------------	-------------------------	-----------	---	--	---	--